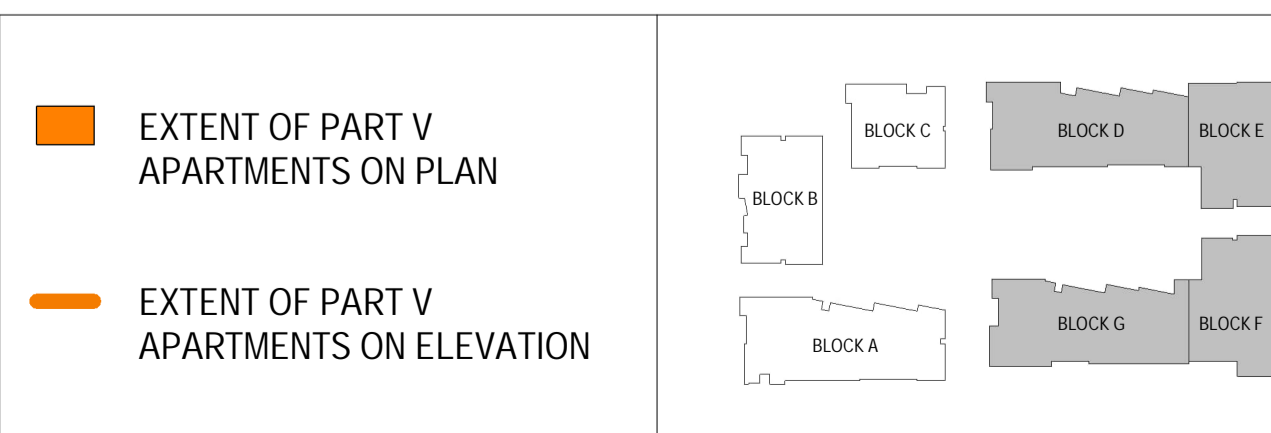


1 PROPOSED SOUTH EAST ELEVATION - AVID SITE
Scale: 1 : 200

PLANNING

REV	DATE	DESCRIPTION	BY
1	22/08/2022	SHD3	RT

■ EXTENT OF PART V APARTMENTS ON PLAN
— EXTENT OF PART V APARTMENTS ON ELEVATION



APPROVED BY
Sedlan

Client: ATLAS GP LIMITED
 Project: CARMANHALL ROAD SHD 2022
 Title: PROPOSED SOUTH EAST ELEVATION - PART V - AVID SITE
 Sheet No.: 1081-MDO-AS-ZZ-DR-A-28003A
 Scale as: As indicated @ A1 Current Rev.: 1 Project No.: 1081

MC CAULEY DAYE O'CONNELL
ARCHITECTS

11 Merrion Square, Dublin 2, Ireland
 Telephone: +353 (0)1 400 4171
 info@mdo.ie | www.mdo.ie

DO NOT SCALE | USE FIGURED DIMENSIONS ONLY | NOTIFY THE ARCHITECTS OF ANY DISCREPANCIES ON THE DRAWING PRIOR TO WORK PROCEEDING | THIS DRAWING IS COPYRIGHT OF MC CAULEY DAYE O'CONNELL ARCHITECTS

18/08/2022 18:50:01